

# ALASKA DEPT. OF TRANSPORTATION & PUBLIC FACILITIES AND CITY & BOROUGH OF SITKA SITKA SEAWALK – PHASE II PROJECT UPDATE

PND ENGINEERS, INC.  
ASSEMBLY PRESENTATION  
DECEMBER 12, 2023



ENGINEERS, INC.

# Project Team:

## City and Borough of Sitka

- Michael Harmon, P.E., Municipal Engineer

## Alaska Dept. of Transportation and Public Facilities

- Greg Lockwood, P.E., Project Manager
- Kathryn Erickson, Environmental Impact Analyst
- Mary Ann Sweeney, MA, Environmental Tribal Coordinator

## PND Engineers, Inc. – Civil and Structural Design

- Tyler Bradshaw, P.E., Design Manager

## Anderson Land Planning – Landscape Architecture

- Monique Anderson, ASLA

## Morris Engineering Group – Electrical and Lighting Design

- Mark Morris, P.E.





# SEAWALK PHASE II

3 SECTIONS INCLUDED IN PHASE II

1. LIBRARY TO O'CONNELL BRIDGE APPROACH
2. BRIDGE APPROACH TO LIGHTERING FACILITY
3. LIGHTERING FACILITY TO LINCOLN STREET

SECTION 2 TO BE CONSTRUCTED FIRST





# Seawalk Phase II – Status Update

- Completed preliminary design for all three sections – fall 2022
- Completed initial public meeting and outreach – fall 2022 – Jan. 2023
- Completed investigation of rock wall in tidelands. Determined the wall is outside of the project area – February 2023
- Revised Section 3 layout based on public input – spring 2023
- Environmental review and permitting – ongoing
- Tribal coordination – ongoing
- Design of Section 2 – ongoing



# SEAWALK PHASE II – PUBLIC ENGAGEMENT

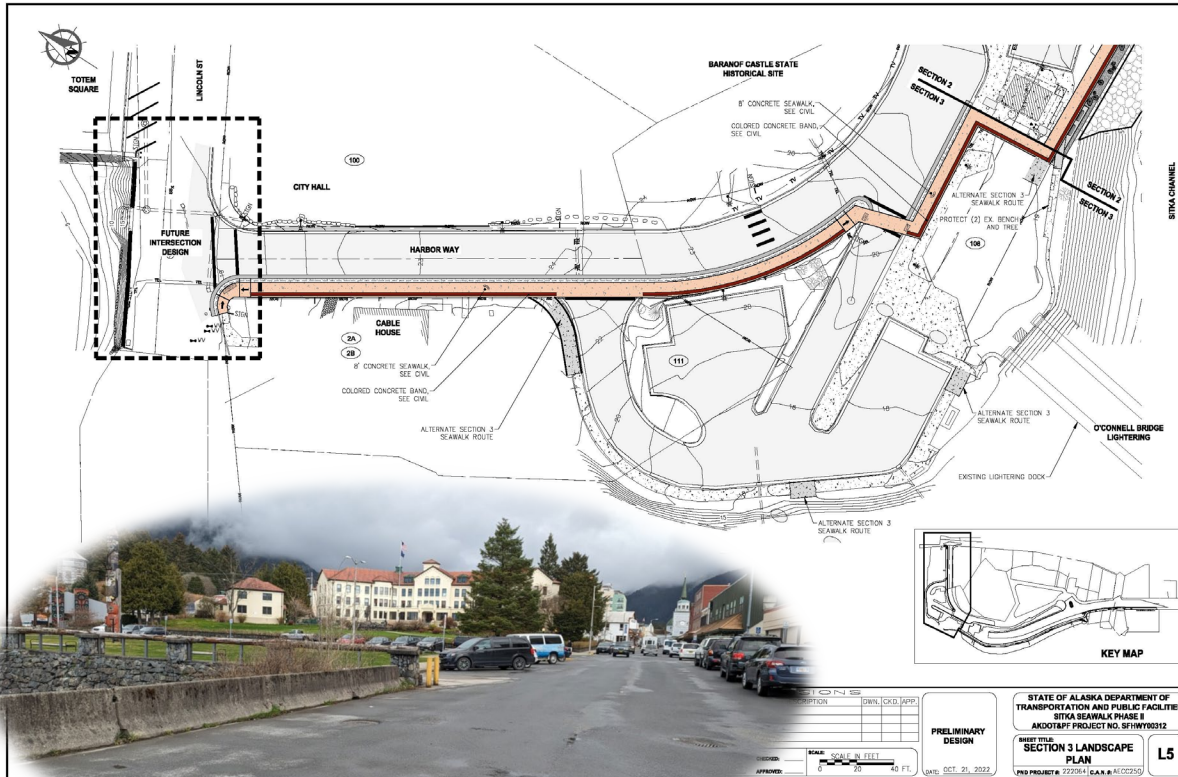
- **PUBLIC MEETING NO. 1 HELD NOV. 30, 2022**
- **COMMENT COLLECTOR, NOV. 10, 2022 – JAN. 4, 2023**
- **29 COMMENTS RECEIVED IN COLLECTOR AND EMAIL**
- **11 IN FAVOR**
  - Safety
  - Walkability
  - Accessibility
- **8 OPPOSED**
  - Valuing Visitors over Residents
  - Habitat and Cultural Impacts
  - Cost
- **REMAINING NEUTRAL**
  - Design Suggestions
  - Radio Station

- “As a 35 year resident of Sitka, I think this is a wonderful project!”
- “This is a fantastic project that will help our town to be more walkable. Phase two honors the waterfront and adds another route for people to get downtown, in a safer way.”
- “I do not have a car and I try to walk everywhere. I am therefore very excited to see the plans for the extension of the seawalk.”
- “I fully support this project as it will add accessibility to downtown while extending the sea walk trail to the park one of my favorite walks as a resident”
- “A perfectly good sidewalk already exists. Stop valuing a positive visitor experience over the residents of this community.”
- “My concerns about this project include impacts to the eelgrass bed and cultural area in the form of the manmade rock wall in the project's area of construction.”
- “Installing a seawalk will make that stretch of land from the foot of the bridge to the parking lot really ugly.”



# Seawalk Phase II – Layout Revisions

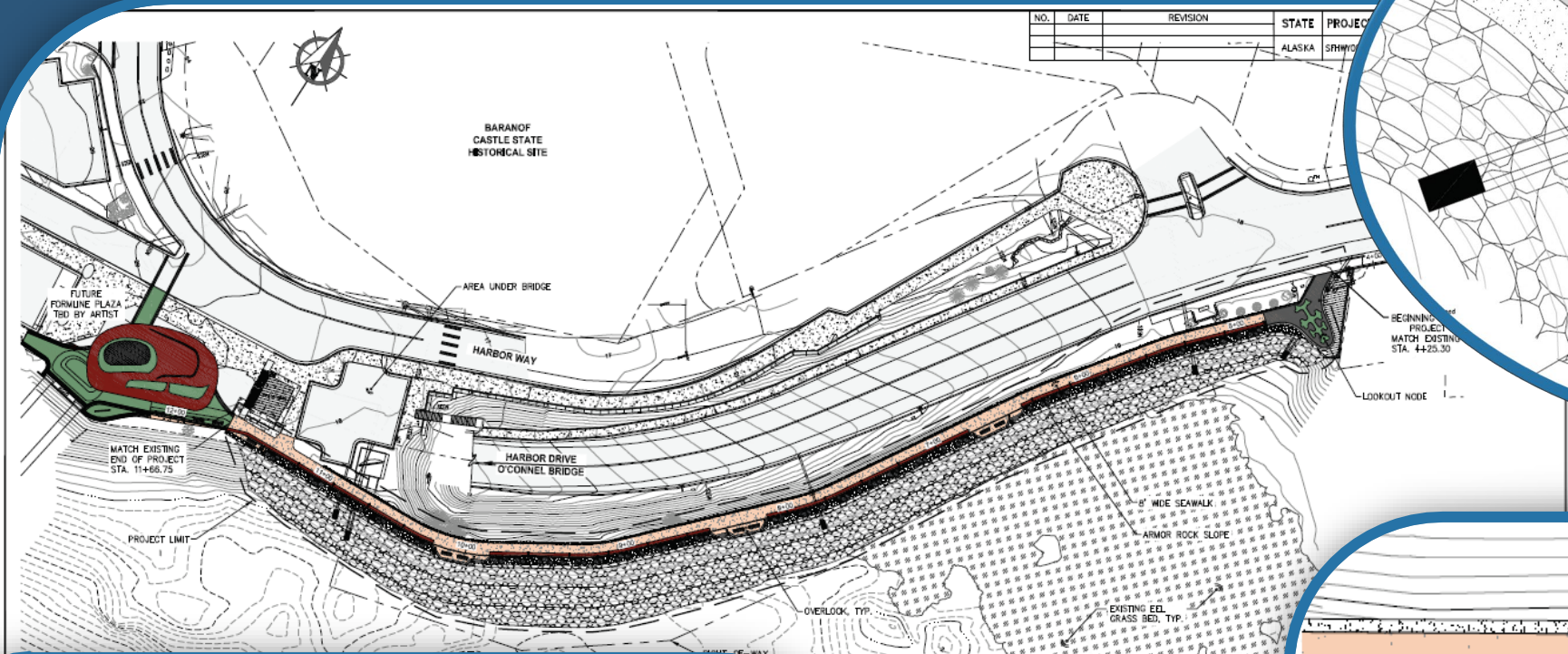
- Multiple comments related to Section 3 Layout
- Use route along shore
- Connect to Totem Square (CBS)



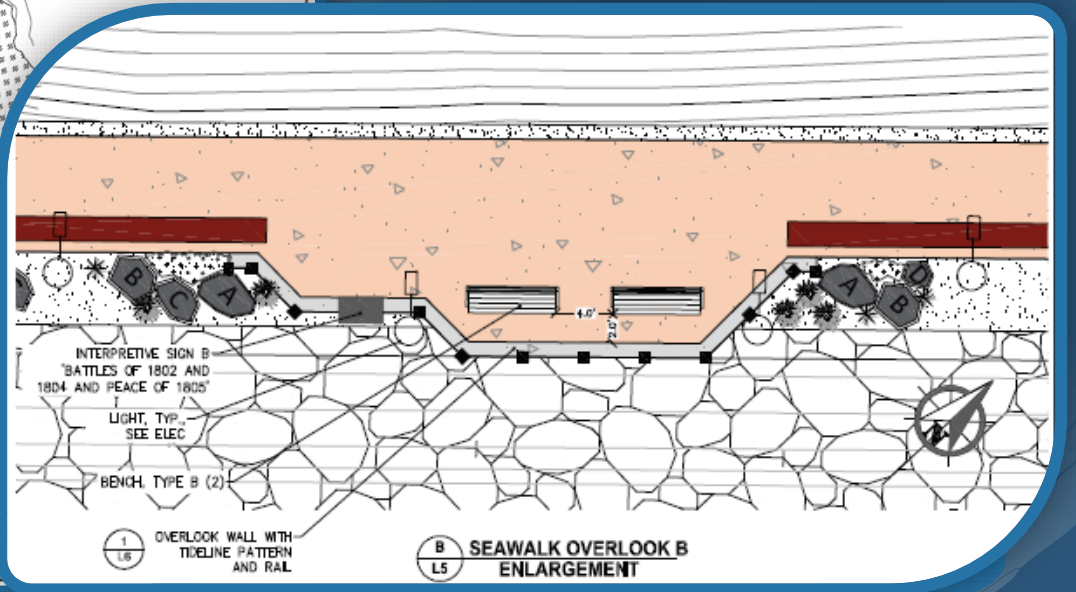
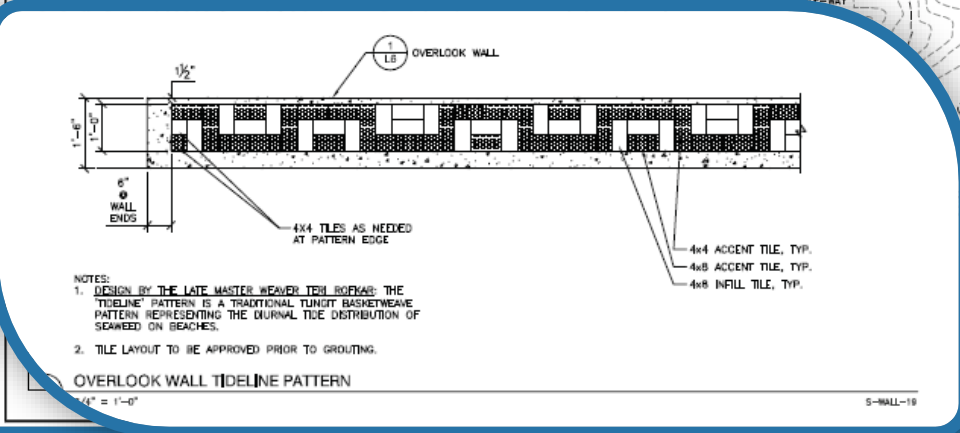
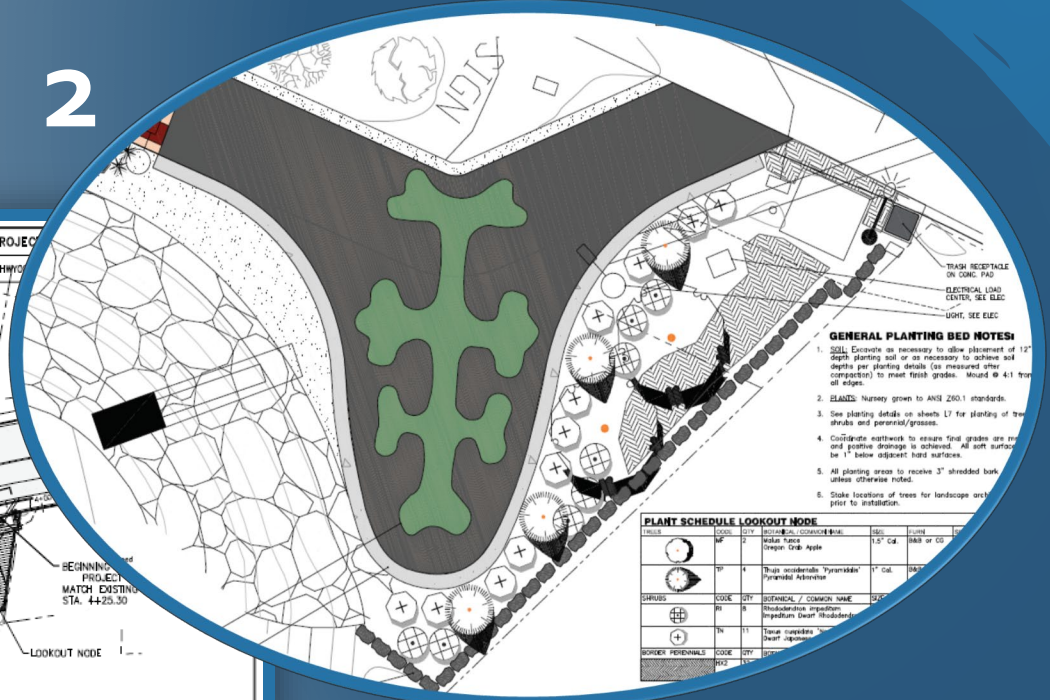


# SEAWALK PHASE II - SECTION 2

## CURRENT DESIGN



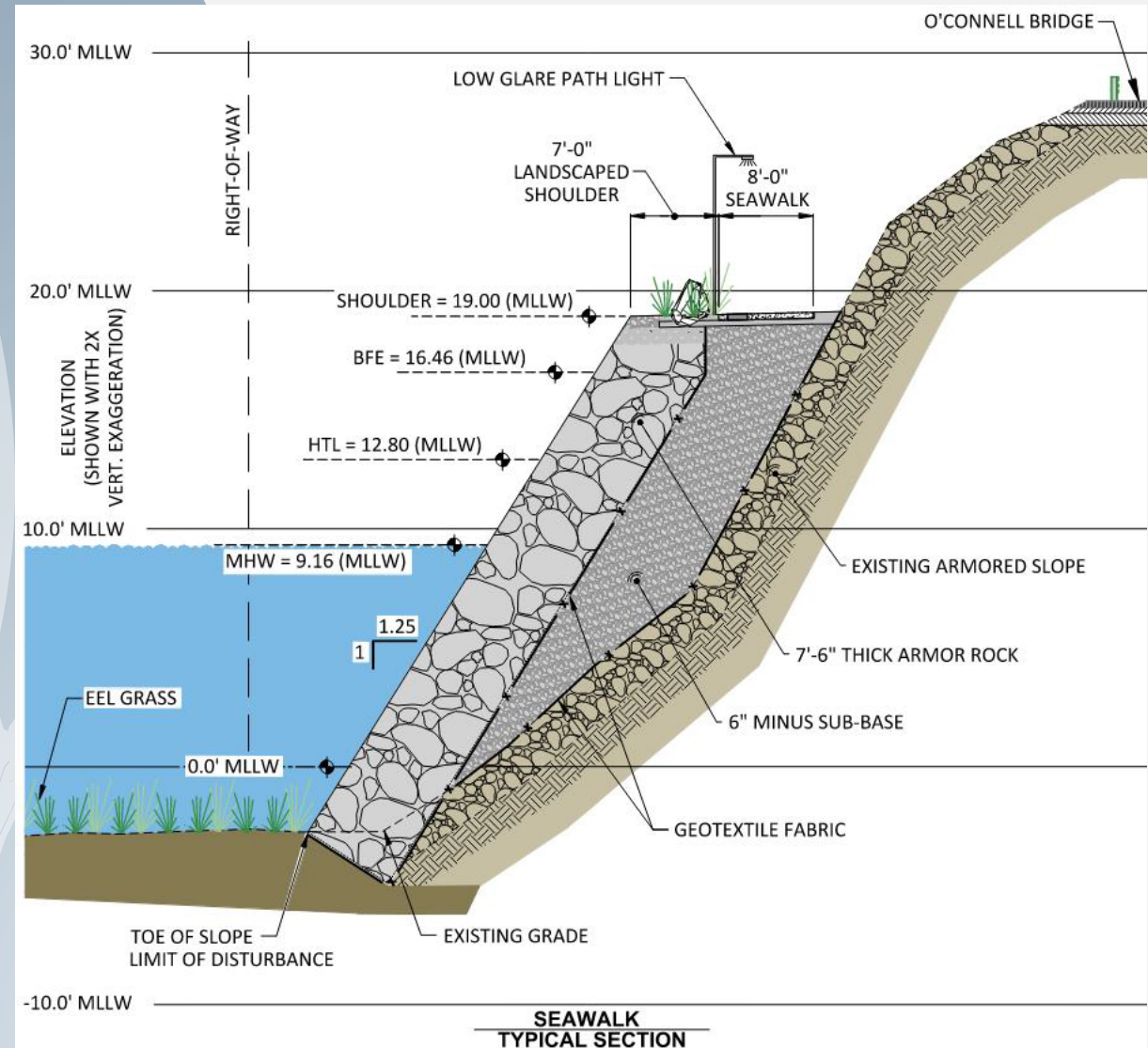
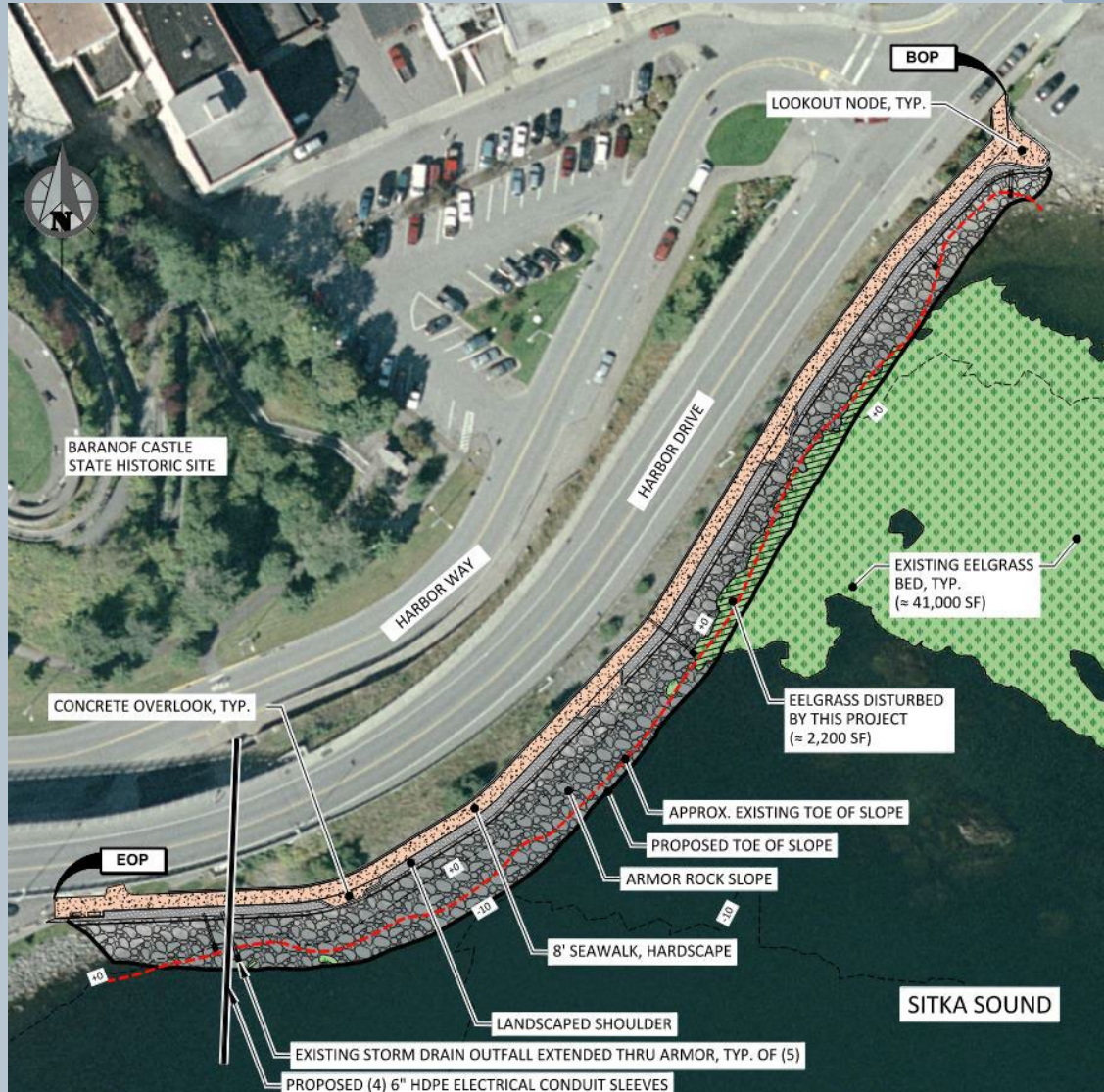
NO.	DATE	REVISION	STATE	PROJECT
			ALASKA	SRHWY





# Seawalk Phase II – Section 2

## Current Design – Fill Limits





# Seawalk Phase II – Section 2

## Design Elements









# Seawalk Phase II – Section 2

## Ongoing Maintenance

- CBS Responsible for path and amenities.
- DOT responsible for fill and armor stone

### Estimated Annual Maintenance Cost – Provided by CBS

Cost Category	Cost Description	Annual Estimated Cost
Custodial Services	Supplies	\$150.00
	Payroll/Wages	\$1,500.00
	Disposal Fees	\$100.00
Standard Maintenance Services	Fixture Maintenance	\$600.00
	Vandalism Response	\$240.00
	Hardscape Maintenance	\$300.00
	Landscaping Maintenance	\$1,310.00
	Miscellaneous	\$200.00
Snow & Ice Management	Materials	\$200.00
	Ice Management	\$450.00
	Snow Removal	\$300.00
Equipment	Depreciation	\$200.00
	Fuel	\$50.00
<b>Total Annual Maintenance Costs (CBS)</b>		<b>\$5,600.00</b>

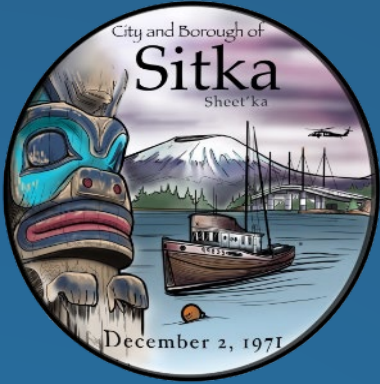


# SEAWALK PHASE II - SECTION 2

## UPCOMING

- **SECOND PUBLIC MEETING – DESIGN UPDATE LATE JANUARY/EARLY FEBRUARY**
- **COORDINATION WITH STA ON ENVIRONMENTAL DOCUMENT AND INTERPRETIVE SIGNAGE**
- **COMPLETE ENVIRONMENTAL DOCUMENT AND PROCEED WITH PERMITTING (CRITICAL PATH)**
- **PROCEED WITH SECTION 2 FINAL DESIGN AFTER ENVIRONMENTAL DOCUMENT IS COMPLETE**
- **CONSTRUCTION LATE 2024/2025. WORK WILL OBSERVE FISH WINDOWS AND WILL AIM TO AVOID PEAK TOURISM CONFLICTS.**





# THANK YOU!

Tyler Bradshaw, PE 

907.586.2093 

tbradshaw@pndengineers.com 

www.pndengineers.com 